

Note: This is a colour drawing, in order to ensure any subsequent reproduction is viewed correctly it is to be re-printed in full colour



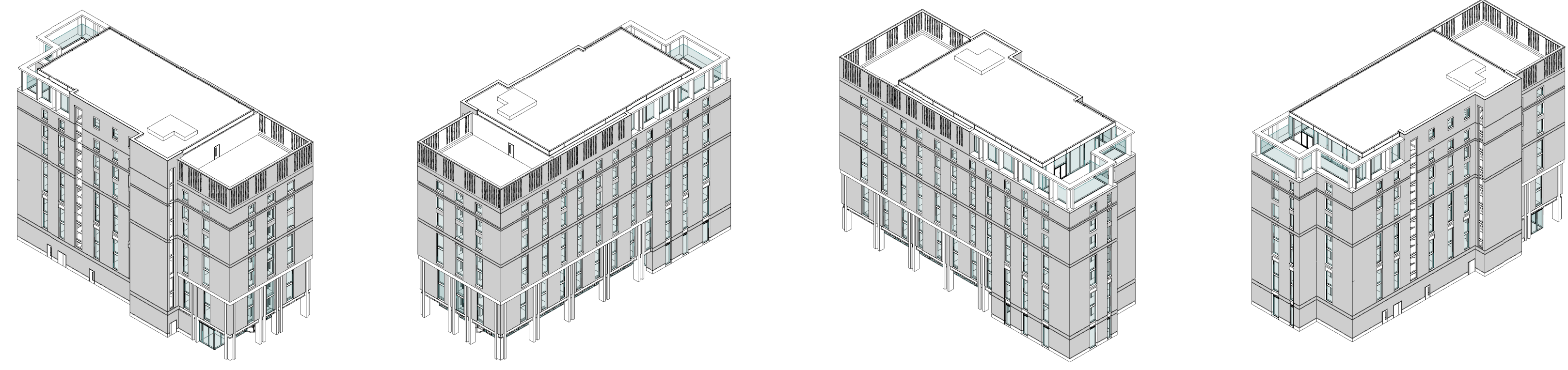
EAST ELEVATION - GLAZING
1: 200

NORTH ELEVATION - GLAZING
1: 200

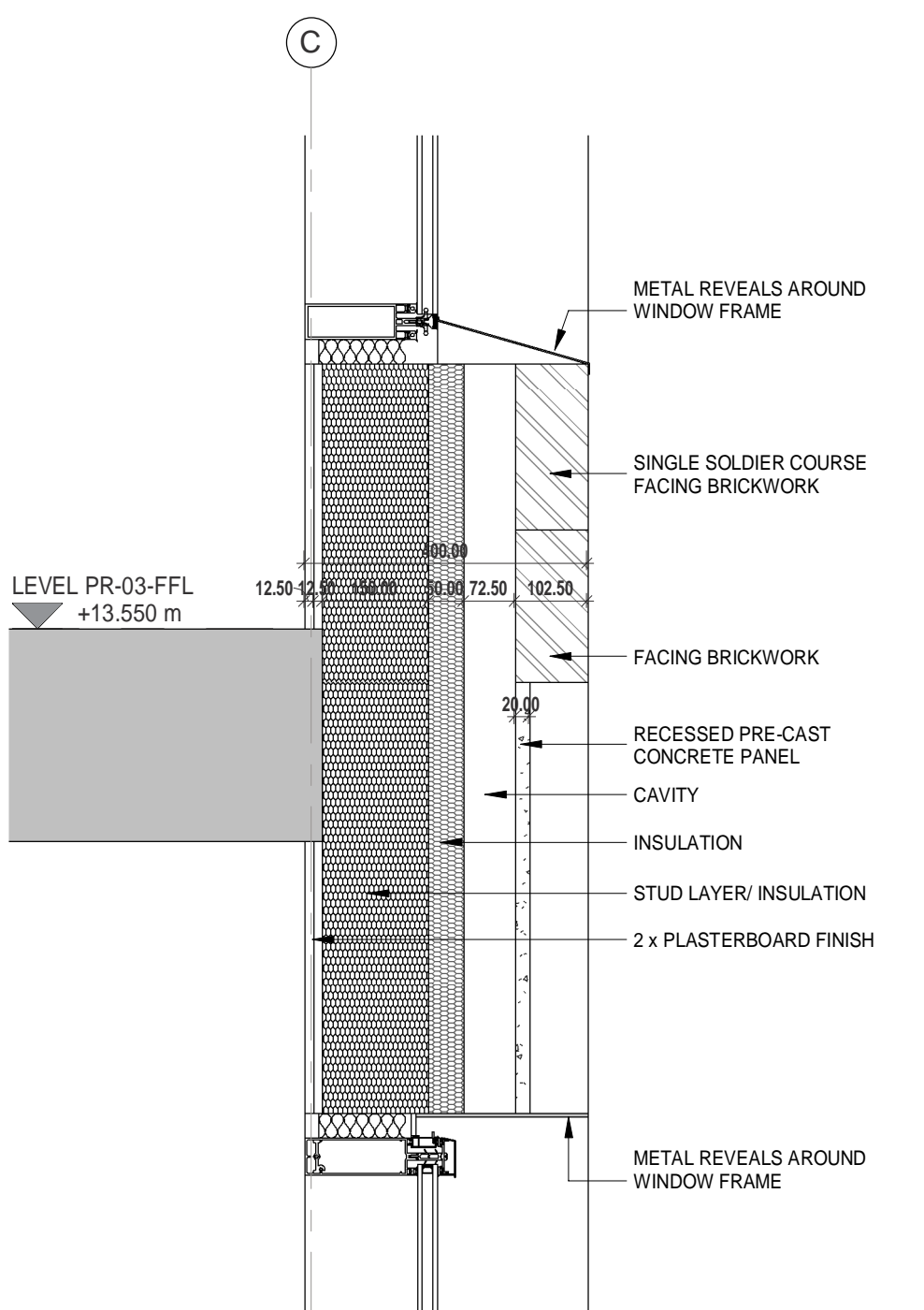


WEST ELEVATION - GLAZING
1: 200

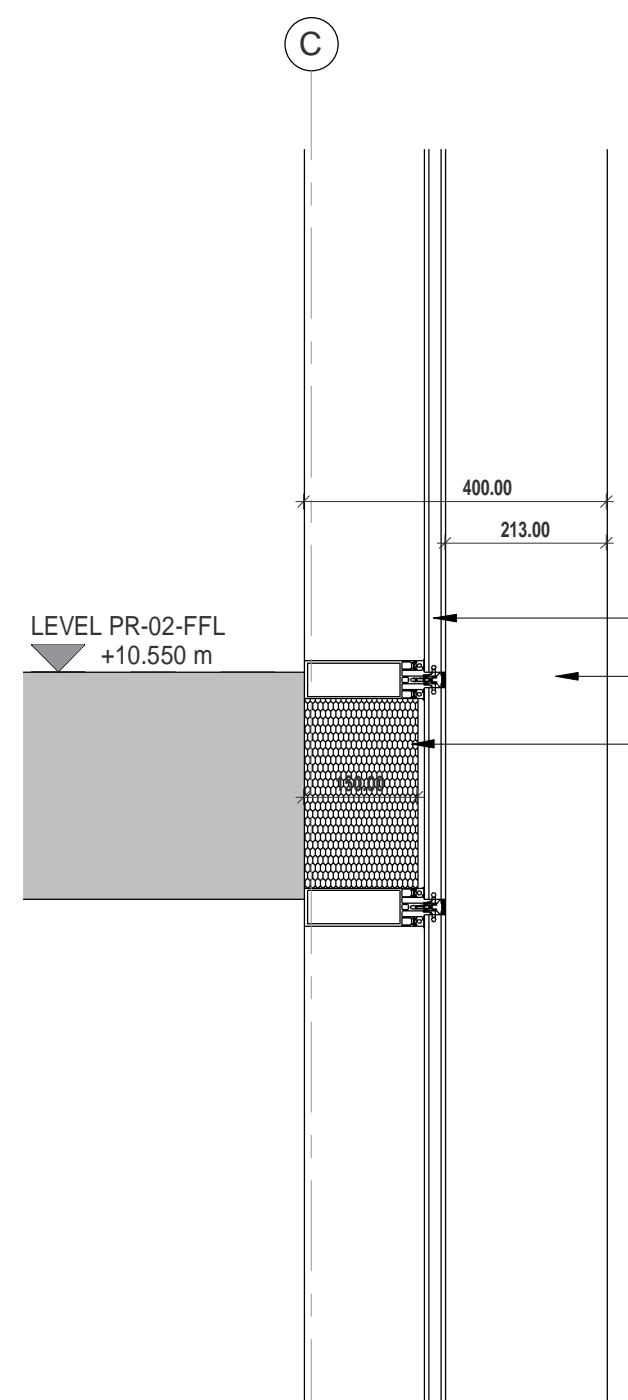
SOUTH ELEVATION - GLAZING
1: 200



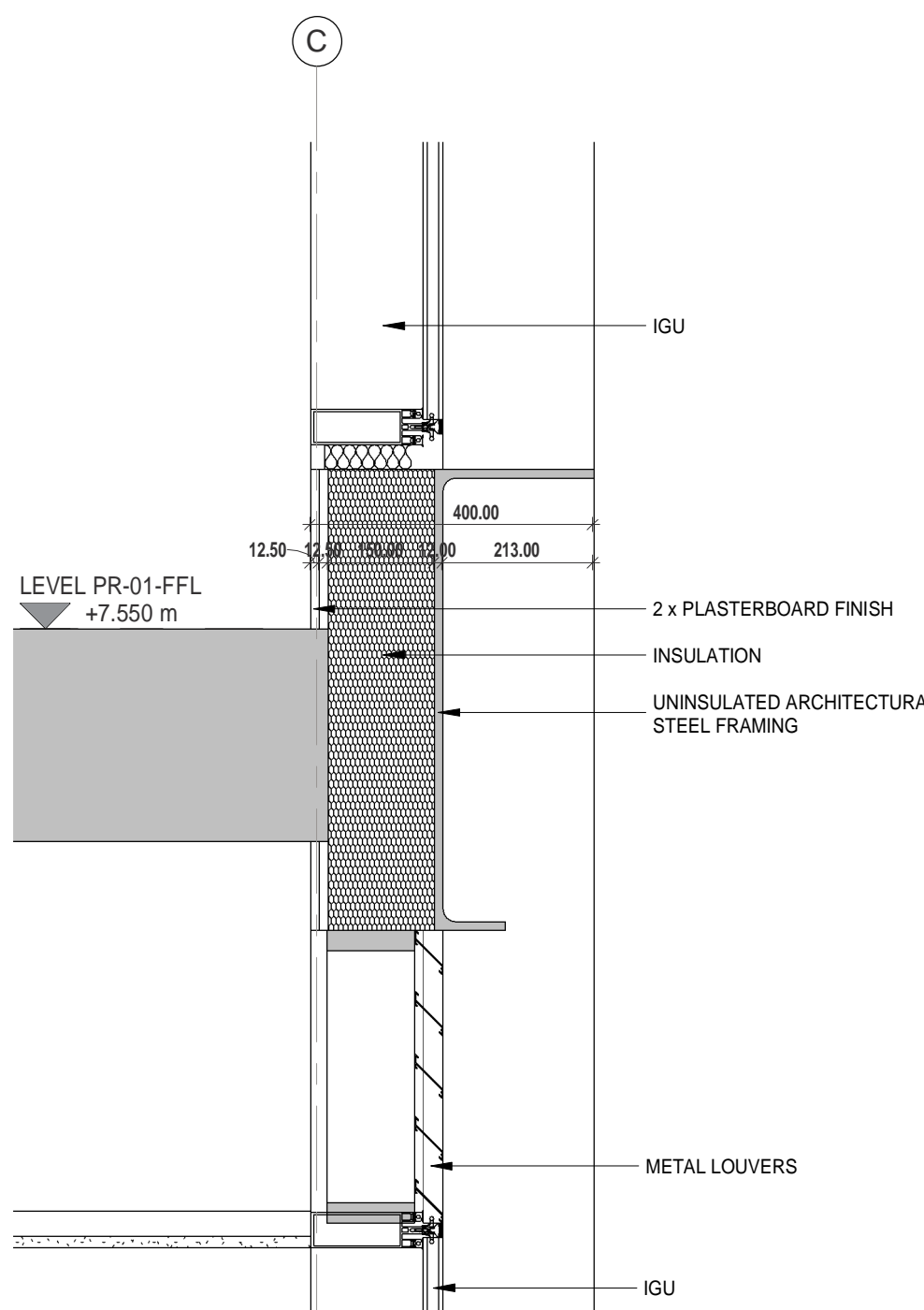
NORTH-WEST ISOMETRIC SOUTH-WEST ISOMETRIC SOUTH-EAST ISOMETRIC NORTH-EAST ISOMETRIC



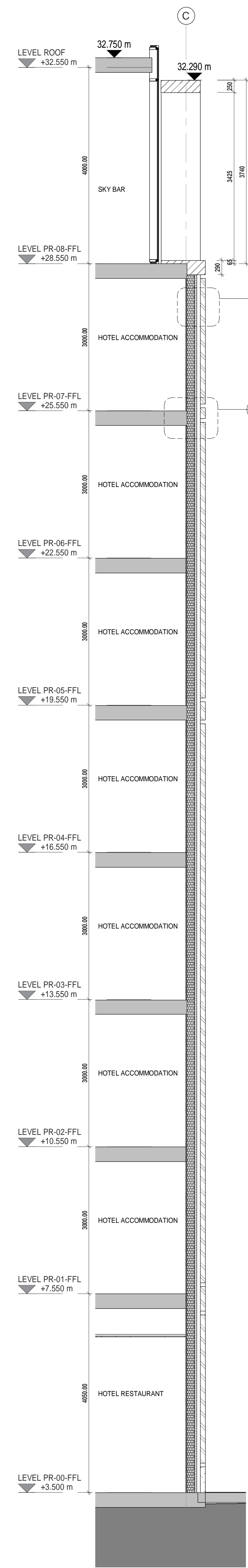
CALL-OUT 10
1: 10



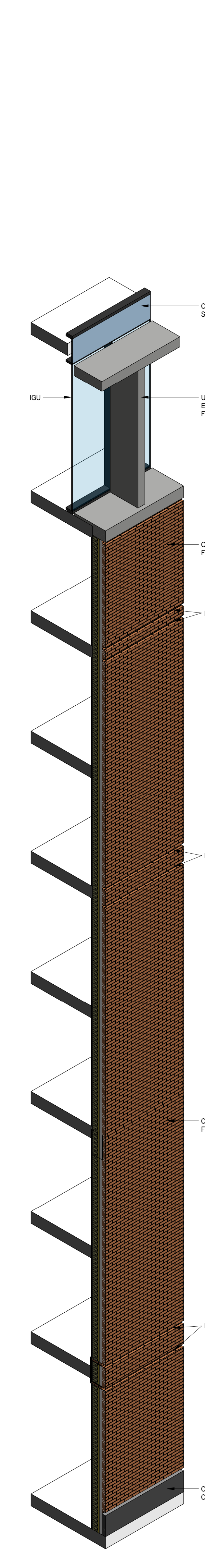
CALL-OUT 11
1: 10



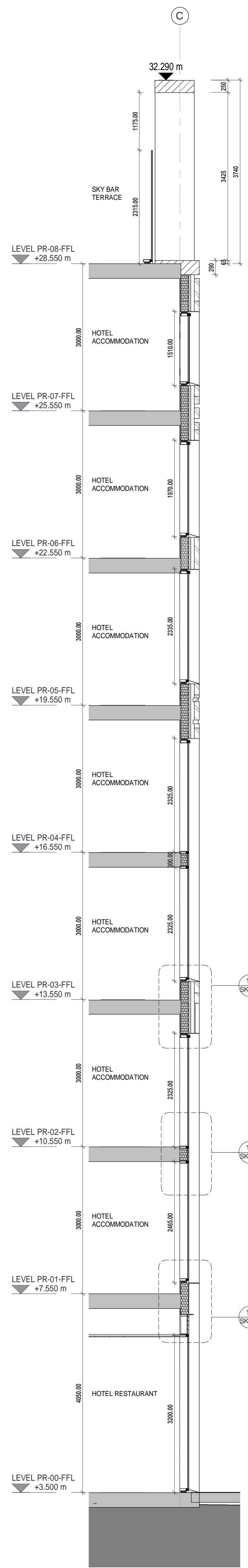
CALL-OUT 12
1: 10



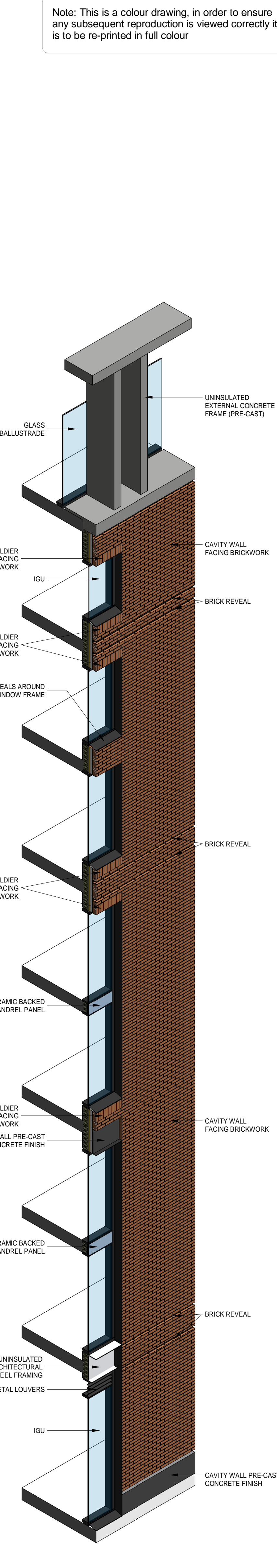
STRIP SECTION 1
1: 50



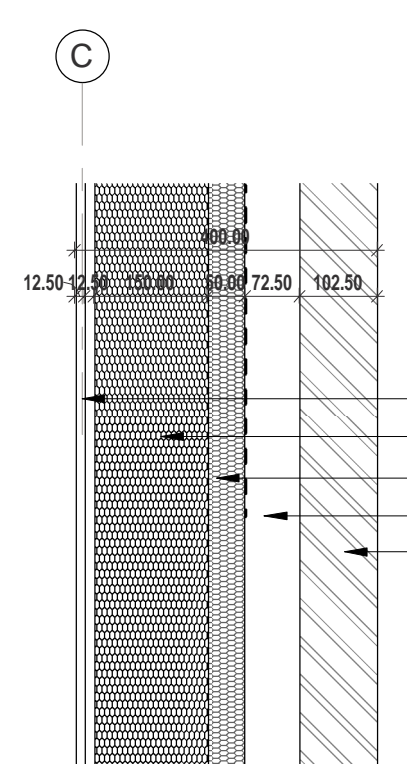
STRIP SECTION 1 - ISO



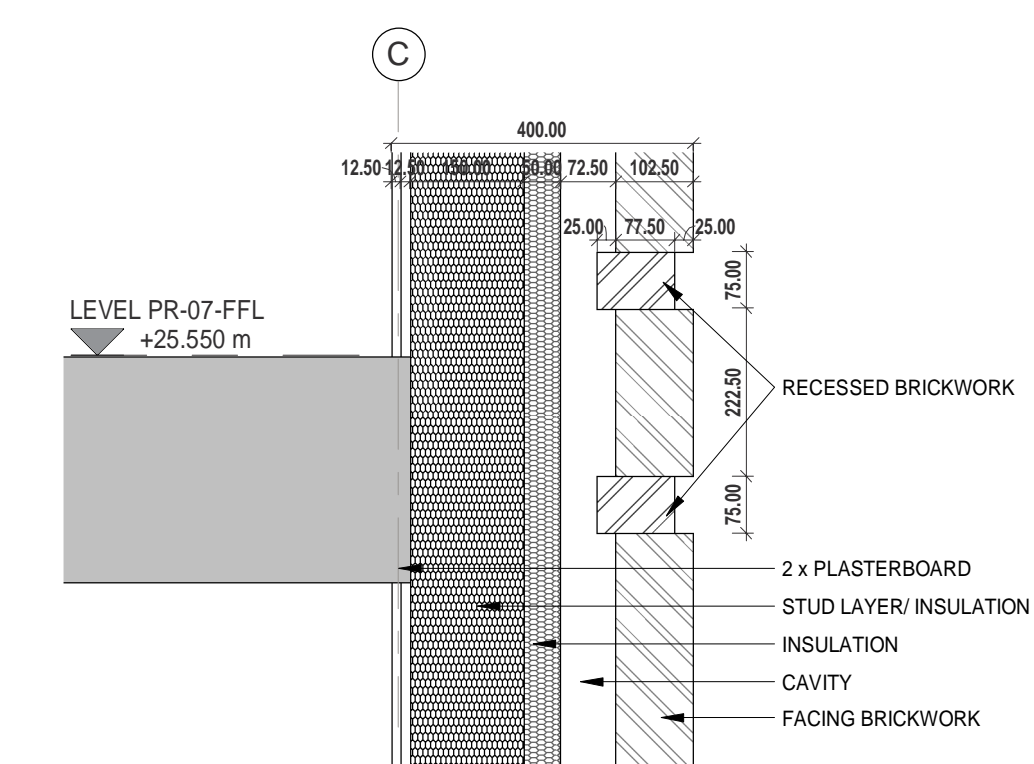
STRIP SECTION 2
1: 50



STRIP SECTION 2 - ISO



CALL-OUT 8
1: 10



CALL-OUT 9
1: 10

DESIGN INTENT DRAWING ONLY. WORK IN PROGRESS. MATERIALS AND BUILDERS ARE SUBJECT TO CLIENT APPROVAL TO BE READ IN CONJUNCTION WITH DLA DRAWINGS 0010 - 0030.

ARCHITECTURE
No. 55 | St Paul's Street | Leeds | LS1
0113 887 3100 www.dla-

PROJECT
PRINCES QUAY, HULL HOTEL

TITLE
TYPICAL WALL BUILD-UPS GLAZED & SOLID EXT. AREAS

SCALE As indicated @ A14/03/19 DATE

DRAWN VP REVIEWED JO

DLA REF 2016-223 NUMBER SK002 REVISION STATUS FOR INFORMATION